



Rose Place

Senior Living 8214 Anchor Drive
Port Arthur, TX 77642
409-722-3423 | ALF #000480

enlivant.com

APARTMENT FEATURES

At Rose Place, each luxury apartment is specifically designed to offer an abundance of features that provide you with modern conveniences and design details that will make every day living more enjoyable. Some of these unique features include the following.

Comfort and Style

- Wall-to-Wall Carpeting
- Individually Controlled Heating and Air Conditioning
- Quality Construction Throughout
- Generous Closet and Storage Space
- Window Treatments
- Built-in Bookshelf

Convenience

- Refrigerator/Freezer
- Individual Indoor Mailboxes
- Complimentary Laundry Facilities
- Kitchenettes with Microwaves

Safety

- Emergency Call System in Bedrooms and Bathrooms
- Staff Pagers Interfaced with Emergency Call System
- Personal Care Staff Available 24 hours
- Smoke Detectors
- Fire Protection Sprinkler System
- Illuminated Apartment Entry Ways
- Walk-in Showers with Built-in Safety Grab Bars

* *Reasonable accommodations considered upon request*

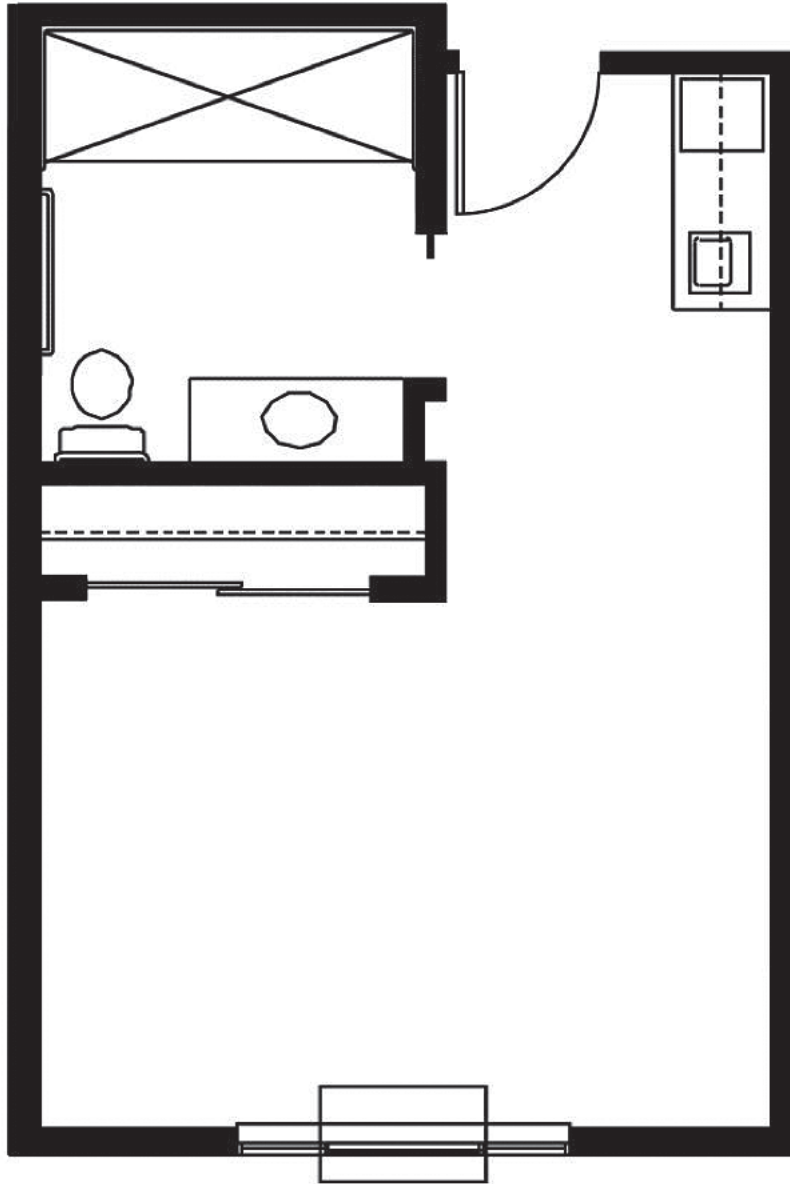




Rose Place

Senior Living 8214 Anchor Drive
Port Arthur, TX 77642
409-722-3423 | ALF #000480

enlivant.com



Studio

One Bath

308 Square Feet (approximately)

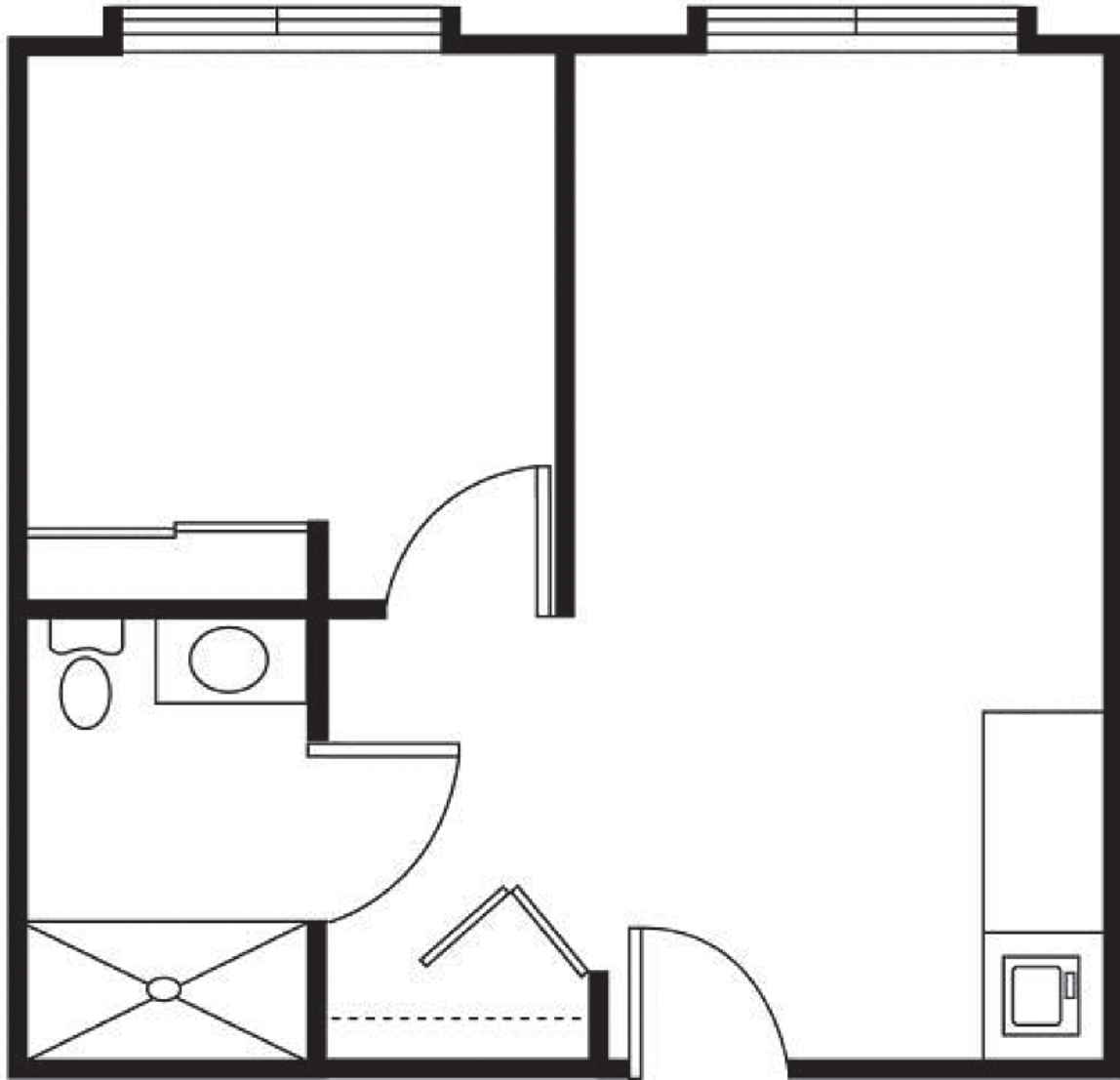




Rose Place

Senior Living 8214 Anchor Drive
Port Arthur, TX 77642
409-722-3423 | ALF #000480

enlivant.com



One Bedroom

One Bedroom / One Bath
420 Square Feet (approximately)

