

APARTMENT FEATURES

At Oakley Place, each luxury apartment is specifically designed to offer an abundance of features that provide you with modern conveniences and design details that will make every day living more enjoyable. Some of these unique features include the following.

Comfort and Style

- Wall-to-Wall Carpeting
- Individually Controlled Heating and Air Conditioning
- Oak Kitchen Cabinets
- Quality Construction Throughout
- Generous Closet and Storage Space

Convenience

- Frost-Free Refrigerator/Freezer
- Microwave
- Individual Indoor Mailboxes
- Complimentary Laundry Facilities

For Your Added Safety

- Emergency Call System in Each Apartment with Interface to Staff Pager System
- Sprinkler System Throughout
- Personal Care Staff Available 24 hours
- Smoke Detectors
- Illuminated Apartment Entry Ways
- Stall Shower with Built-In Safety Grab Bars

* *Reasonable accommodations considered upon request*

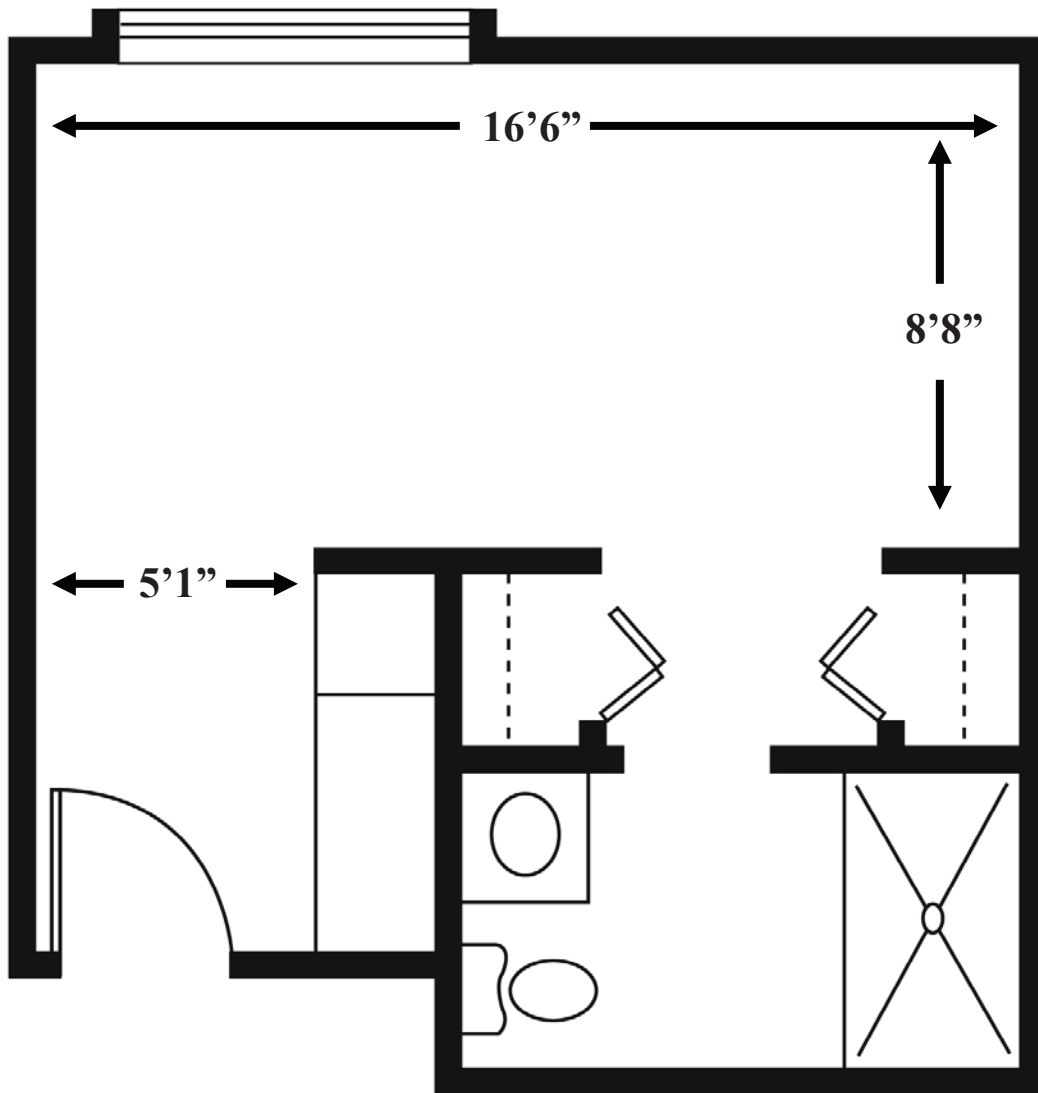


Oakley Place

Senior Living

1275 Northview Drive
Greenville, OH 45331
937-548-9521

enlivant.com



Studio

One Bath

215 Square Feet (approximately)



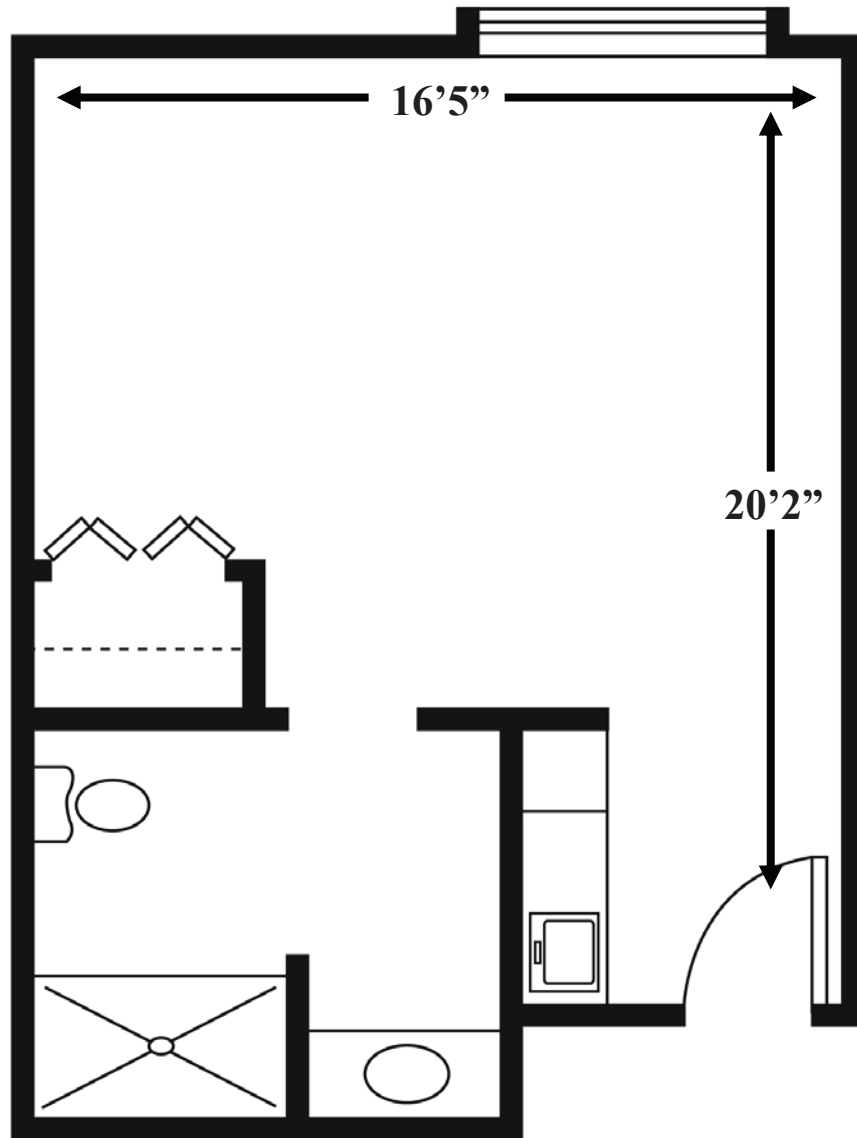


Oakley Place

Senior Living

1275 Northview Drive
Greenville, OH 45331
937-548-9521

enlivant.com



Deluxe Studio

One Bath

333 Square Feet (approximately)



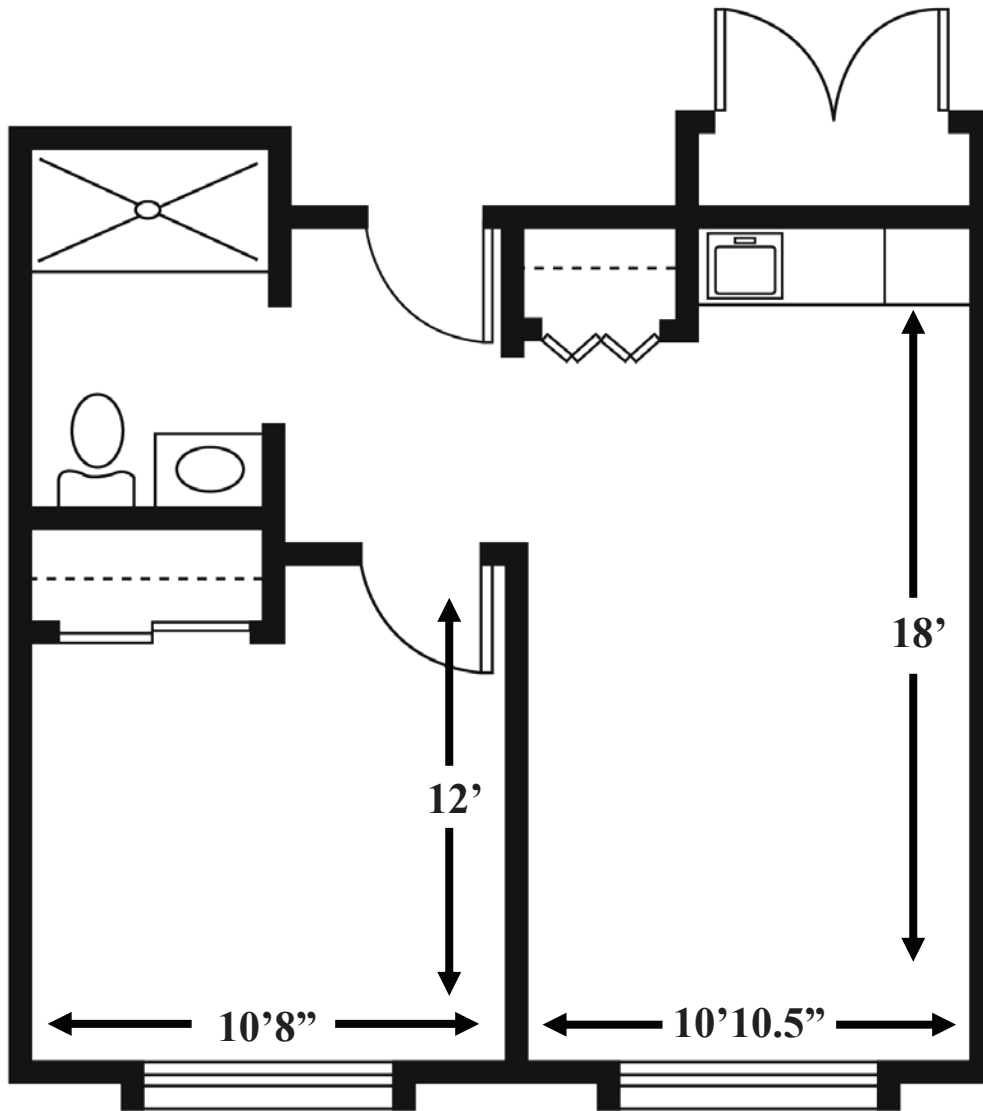


Oakley Place

Senior Living

1275 Northview Drive
Greenville, OH 45331
937-548-9521

enlivant.com



One bedroom

One Bath

378 Square Feet (approximately)

