



# Monroe Place

Senior Living

2770 South Adams Road  
Bloomington, IN 47403  
812-331-8153

[enlivant.com](http://enlivant.com)

## APARTMENT FEATURES

At Monroe Place, each luxury apartment is specifically designed to offer an abundance of features that provide you with modern conveniences and design details that will make every day living more enjoyable. Some of these unique features include the following.

### *Comfort and Style*

- Wall-to-Wall Carpeting
- Individually Controlled Heating and Air Conditioning
- Oak Kitchen Cabinets
- Quality Construction Throughout
- Generous Closet Space

### *Convenience*

- Refrigerator/Freezer
- Individual Indoor Mailboxes
- Complimentary Laundry Facilities

### *For Your Added Safety*

- Emergency Call System in Each Apartment with Interface to Staff Pager System
- Sprinkler System Throughout
- Personal Safety Pendant Available\*
- Personal Care Staff Available 24 hours
- Smoke Detectors
- Illuminated Apartment Entry Ways
- Fiberglass Tub/Shower Combination or Stall Shower with Built-In Safety Grab Bars

\* *Reasonable accommodations considered upon request*



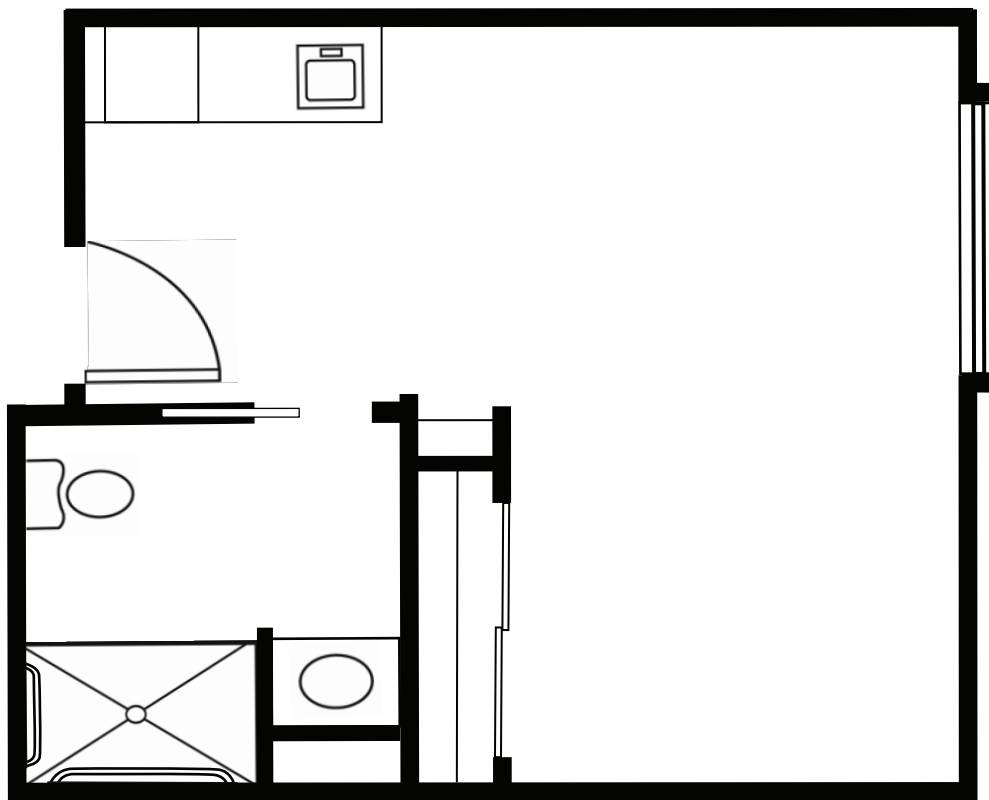


# Monroe Place

Senior Living

2770 South Adams Road  
Bloomington, IN 47403  
812-331-8153

[enlivant.com](http://enlivant.com)



## Studio

One Bath

320 Square Feet (approximately)



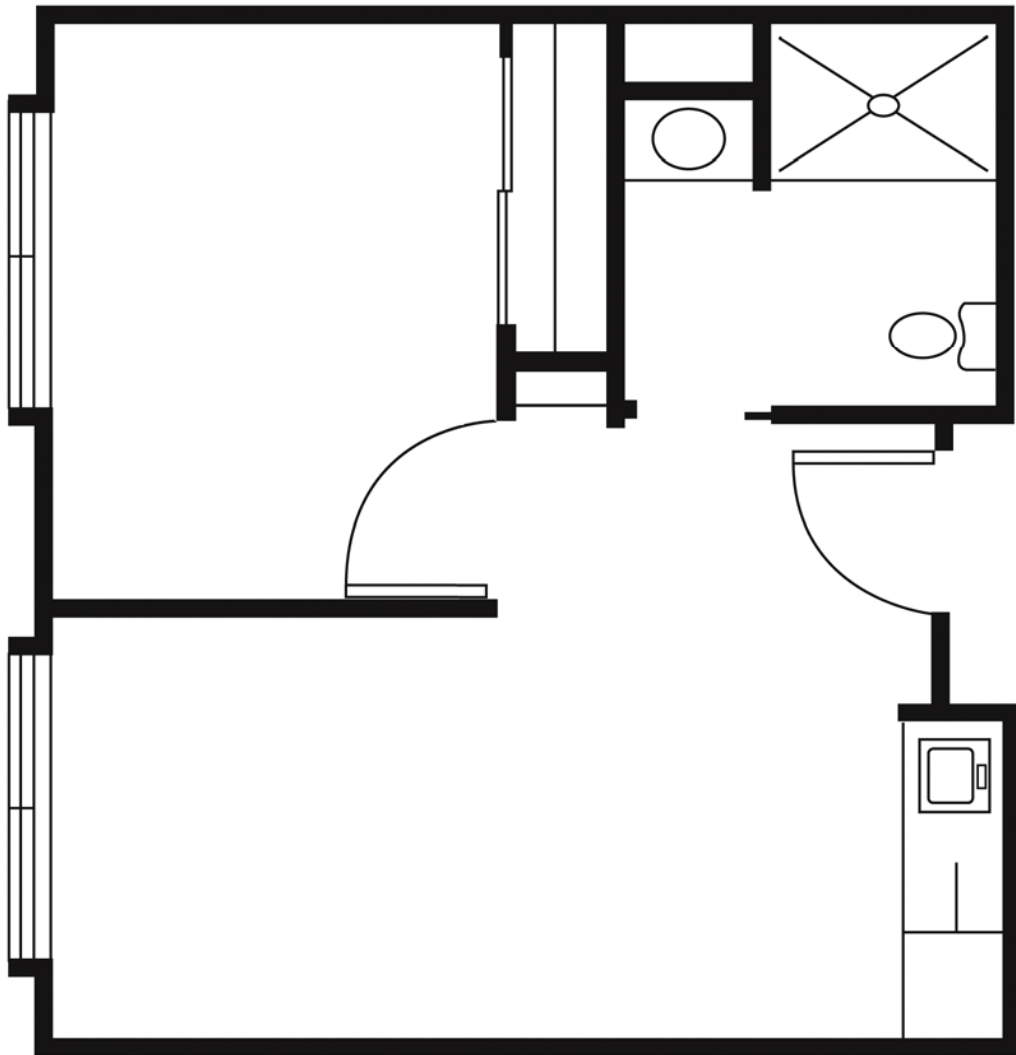


# Monroe Place

Senior Living

2770 South Adams Road  
Bloomington, IN 47403  
812-331-8153

[enlivant.com](http://enlivant.com)



## One Bedroom

One Bedroom / One Bath  
430 Square Feet (approximately)



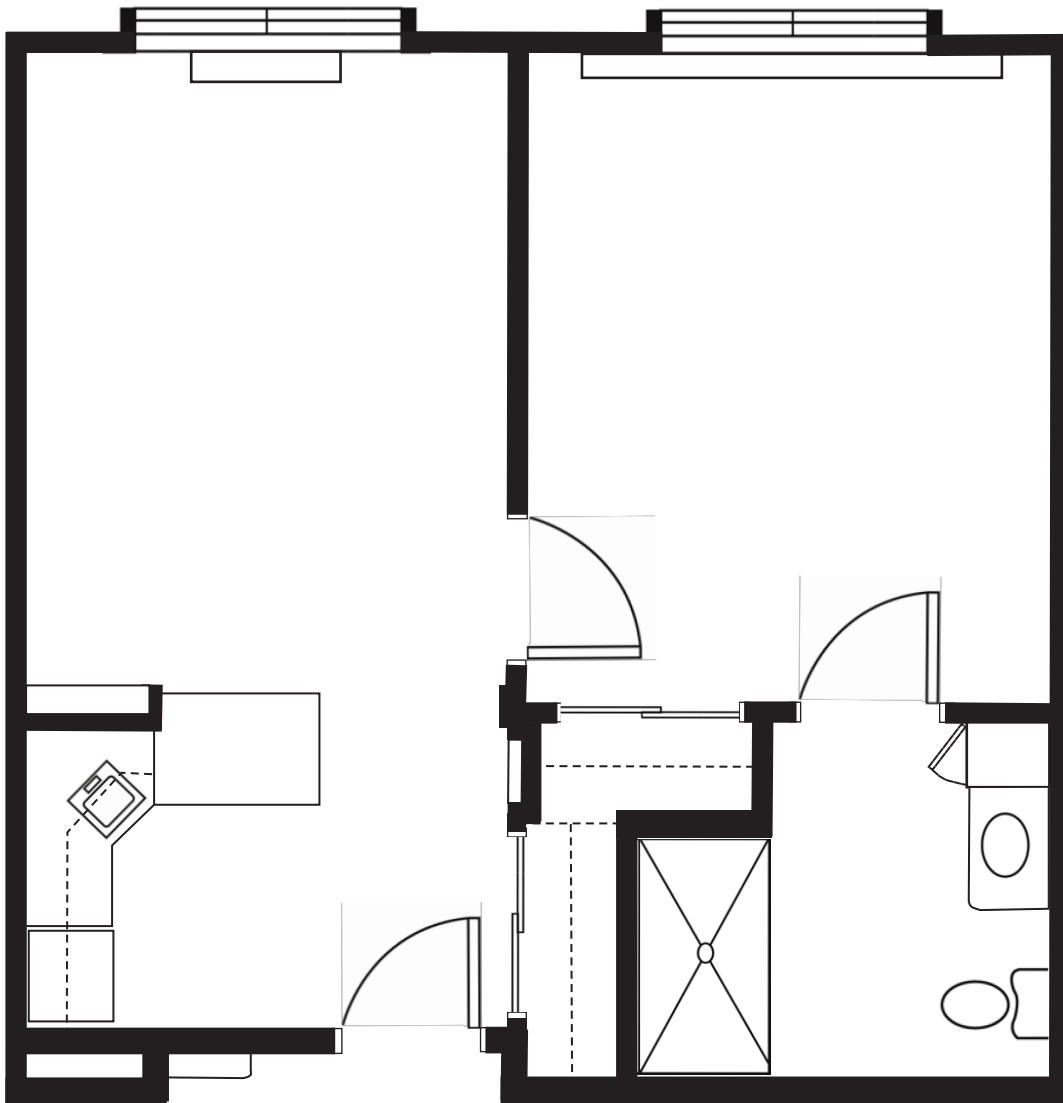


# Monroe Place

Senior Living

2770 South Adams Road  
Bloomington, IN 47403  
812-331-8153

[enlivant.com](http://enlivant.com)



## Deluxe One Bedroom

One Bedroom / One Bath  
540 Square Feet (approximately)

