



# Swan Place

Senior Living

1024 E 12<sup>th</sup> Street  
Carroll, IA 51401  
712-792-6974

[enlivant.com](http://enlivant.com)

## APARTMENT FEATURES

At Swan Place, each luxury apartment is specifically designed to offer an abundance of features that provide you with modern conveniences and design details that will make every day living more enjoyable. Some of these unique features include the following.

### *Comfort and Style*

- Individually Controlled Heating and Air Conditioning
- Oak Kitchen Cabinets
- Quality Construction Throughout
- Generous Closet and Storage Space

### *Convenience*

- Refrigerator/Freezer
- Complimentary Laundry Facilities

### *For Your Added Safety*

- Emergency Call System in Each Apartment with Interface to Staff Pager System
- Sprinkler System Throughout
- Smoke Detectors
- Stall Shower with Built-In Safety Grab Bars

\* *Reasonable accommodations considered upon request*



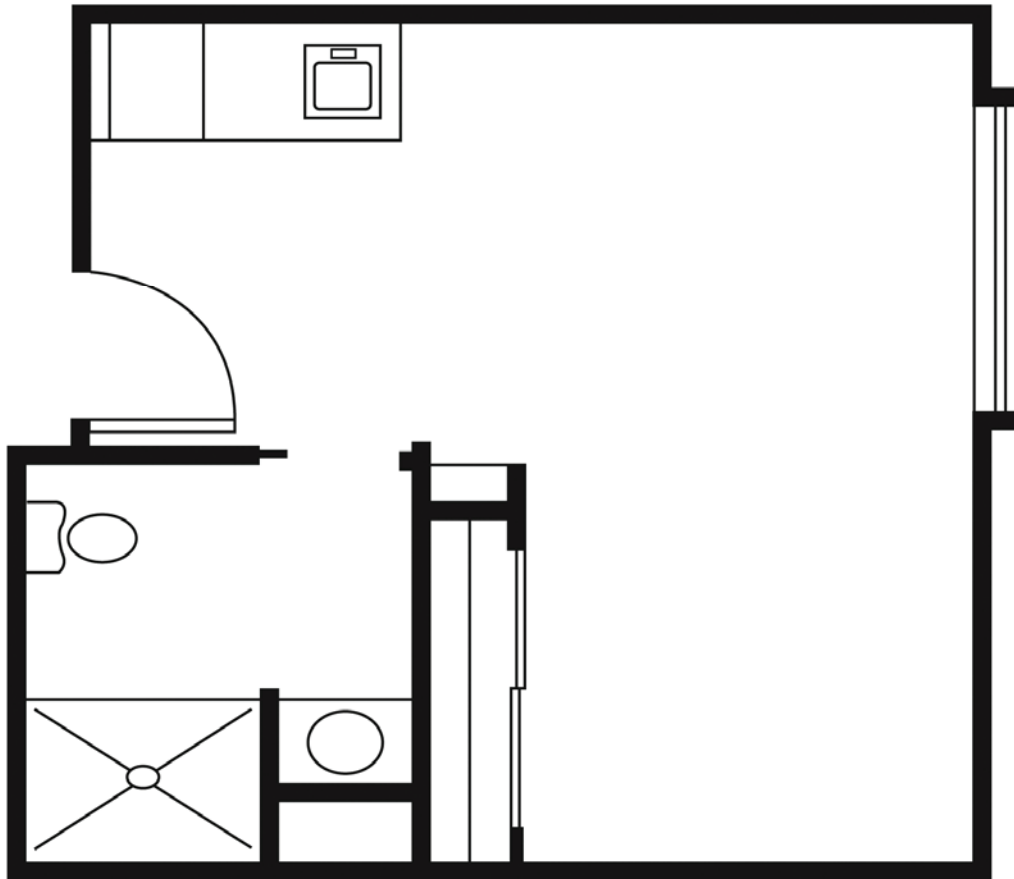


# Swan Place

Senior Living

1024 E 12<sup>th</sup> Street  
Carroll, IA 51401  
712-792-6974

[enlivant.com](http://enlivant.com)



## Studio

One Bath

320 Square Feet (approximately)



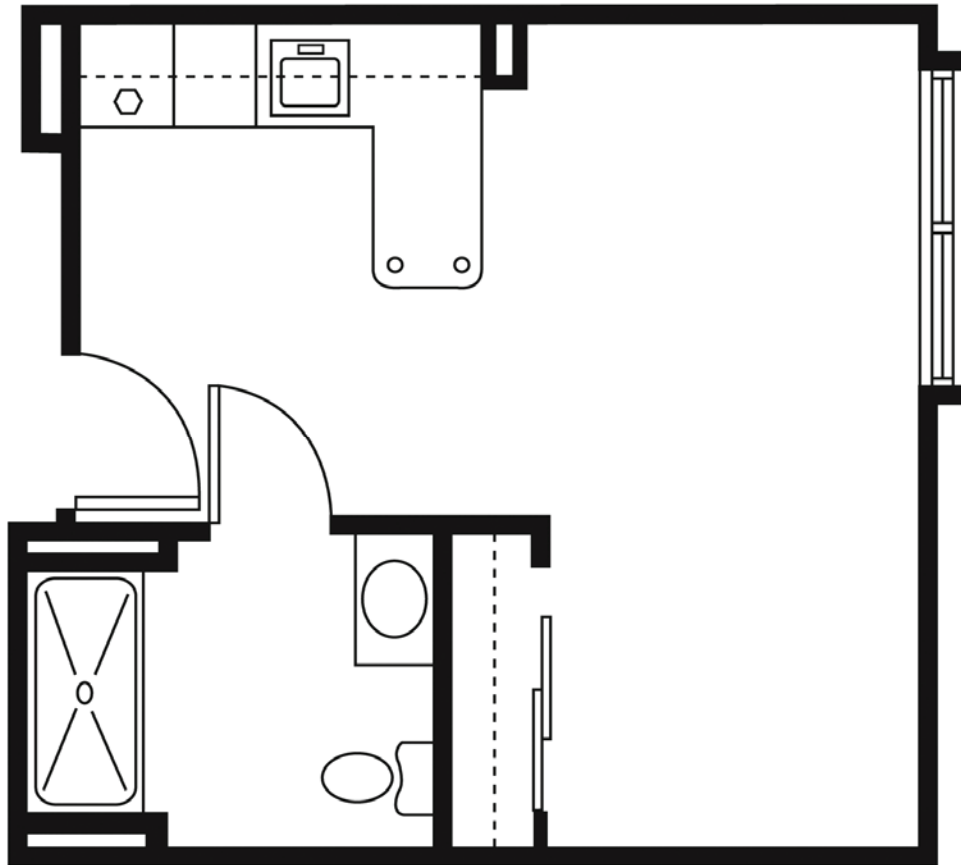


# Swan Place

Senior Living

1024 E 12<sup>th</sup> Street  
Carroll, IA 51401  
712-792-6974

[enlivant.com](http://enlivant.com)



## Studio Premium

One Bath

374 Square Feet (approximately)



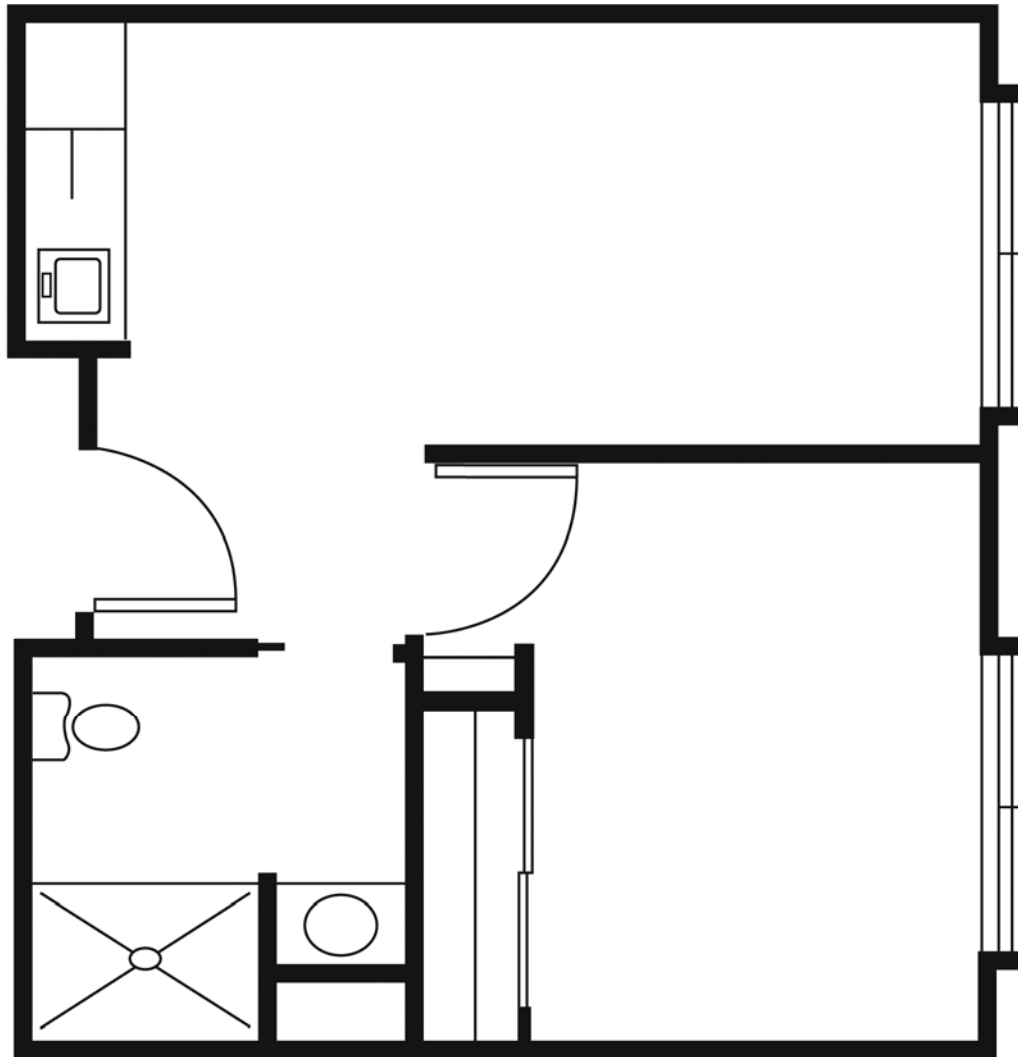


# Swan Place

Senior Living

1024 E 12<sup>th</sup> Street  
Carroll, IA 51401  
712-792-6974

[enlivant.com](http://enlivant.com)



## One Bedroom

One Bedroom / One Bath  
430 Square Feet (approximately)



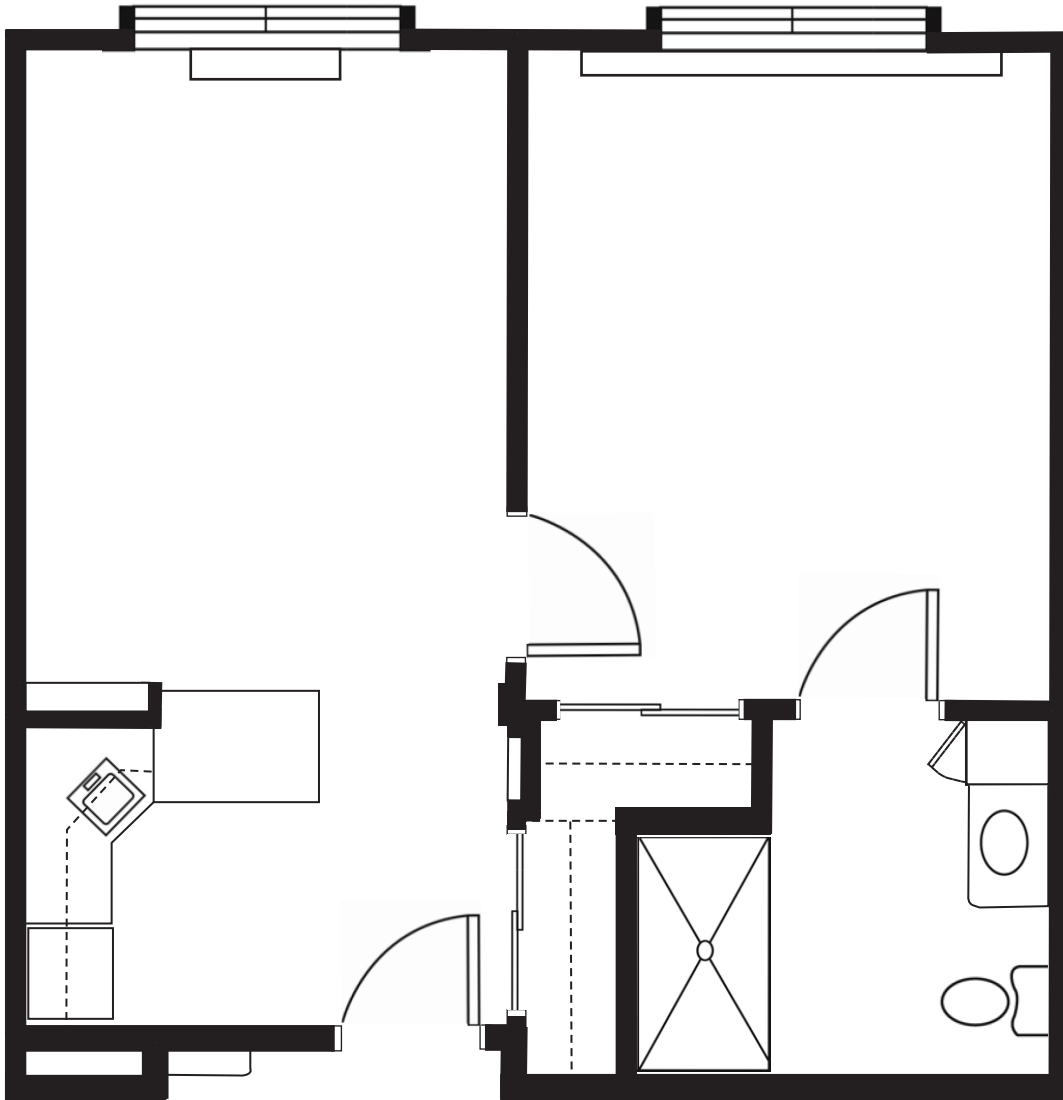


# Swan Place

Senior Living

1024 E 12<sup>th</sup> Street  
Carroll, IA 51401  
712-792-6974

[enlivant.com](http://enlivant.com)



## One Bedroom Premium

One Bedroom / One Bath  
557 Square Feet (approximately)

