



Chisholm Place

Senior Living

1450 East North 10th Street
Abilene, TX 79601
325-670-0961 | ALF #000626

enlivant.com

APARTMENT FEATURES

At Chisholm Place, each luxury senior living apartment is specifically designed to offer an abundance of features that provide you with modern conveniences and design details that will make every day living more enjoyable. Some of these unique features include the following.

Comfort and Style

- Wall-to-Wall Carpeting
- Individually Controlled Heating and Air Conditioning
- Quality Construction Throughout
- Generous Closet and Storage Space

Convenience

- Individual Indoor Mailboxes
- Complimentary Laundry Facilities
- Refrigerator/Freezer
- Kitchenettes with Microwaves

For Your Added Safety

- Emergency Call System in Each Apartment with Interface to Staff Pager System
- Registered Nurse On-site or On Call
- Sprinkler System Throughout
- Personal Care Staff Available 24 hours
- Smoke Detectors
- Illuminated Apartment Entry Ways
- Fiberglass Roll-In Shower Combination with Built-In Safety Grab Bars



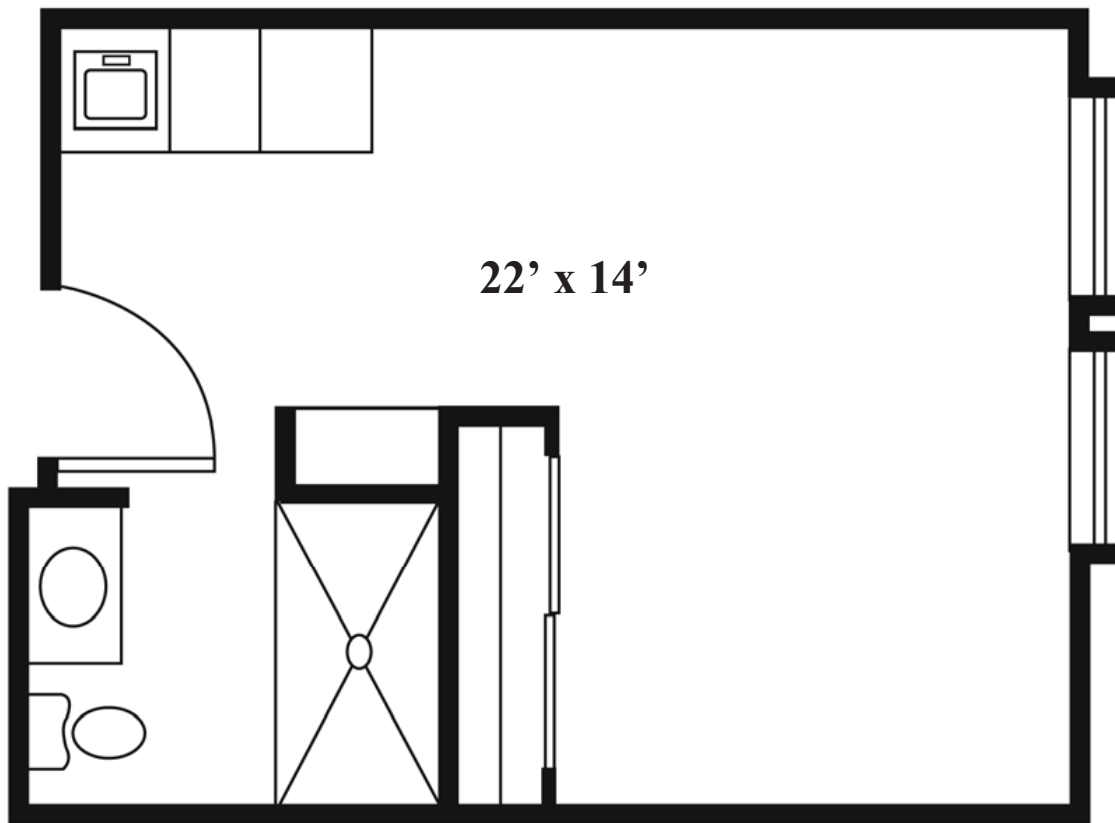


Chisholm Place

Senior Living

1450 East North 10th Street
Abilene, TX 79601
325-670-0961 | ALF #000626

enlivant.com



Studio

One Bath

308 Square Feet (approximately)





Chisholm Place

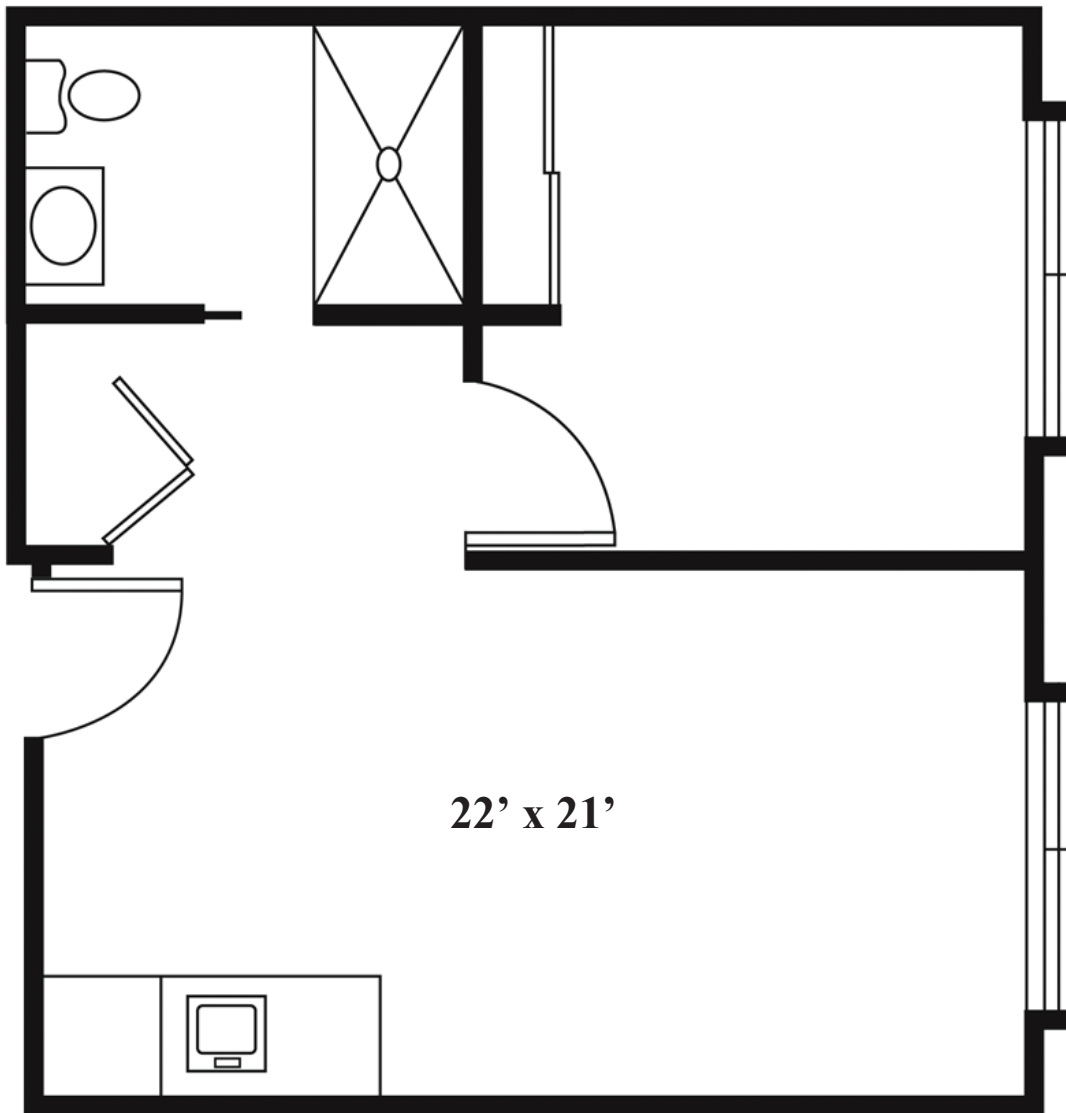
Senior Living

1450 East North 10th Street

enlivant.com

Abilene, TX 79601

325-670-0961 | ALF #000626



One Bedroom

One Bedroom / One Bath
462 Square Feet (approximately)

