



# North Woods Place

Senior Living

501 South Lincoln Road  
Escanaba, MI 49829  
906-789-2268 | ALF #000621

[enlivant.com](http://enlivant.com)

## APARTMENT FEATURES

At North Woods Place, each deluxe apartment is specifically designed to offer an abundance of features that provide you with modern conveniences and design details that will make every day living more enjoyable. Some of these unique features include the following.

### *Comfort and Style*

- Wall-to-Wall Carpeting
- Individually Controlled Heating and Air Conditioning
- Oak Kitchen Cabinets
- Quality Construction Throughout
- Generous Closet and Storage Space

### *Convenience*

- Frost-Free Refrigerator/Freezer
- Individual Tenant Storage Compartment on Each Floor
- Individual Indoor Mailboxes
- Complimentary Laundry Facilities on Each Floor

### *For Your Added Safety*

- Emergency Call System in Each Apartment with Interface to Staff Pager System
- Sprinkler System Throughout
- Personal Safety Pendant Available\* (included with AL, extra for independent)
- Personal Care Staff Available 24 hours
- Personal Safety Pendant Available
- Smoke Detectors
- Fire Protection Sprinkler System
- Illuminated Apartment Entry Ways
- Fiberglass Tub/Shower Combination or Stall Shower with Built-In Safety Grab Bars

\* Reasonable accommodations considered upon request





# North Woods Place

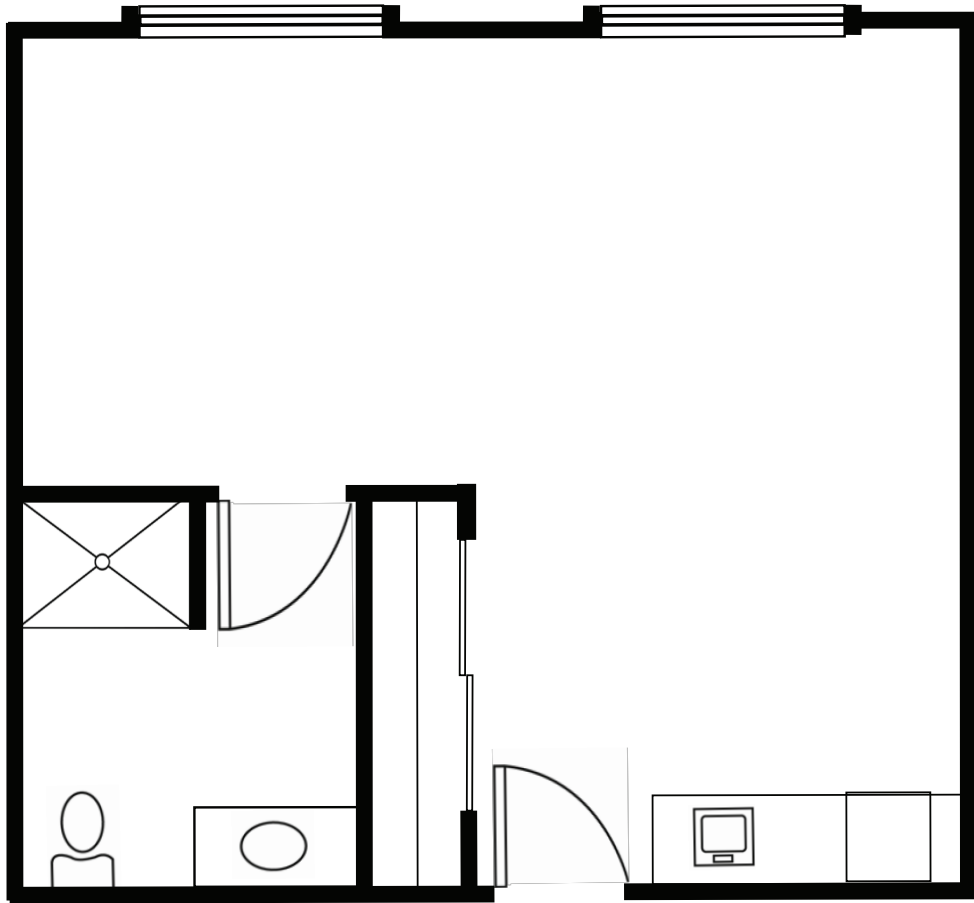
Senior Living

501 South Lincoln Road

Escanaba, MI 49829

906-789-2268 | ALF #000621

[enlivant.com](http://enlivant.com)



## Studio

One Bath

460 Square Feet (approximately)





# North Woods Place

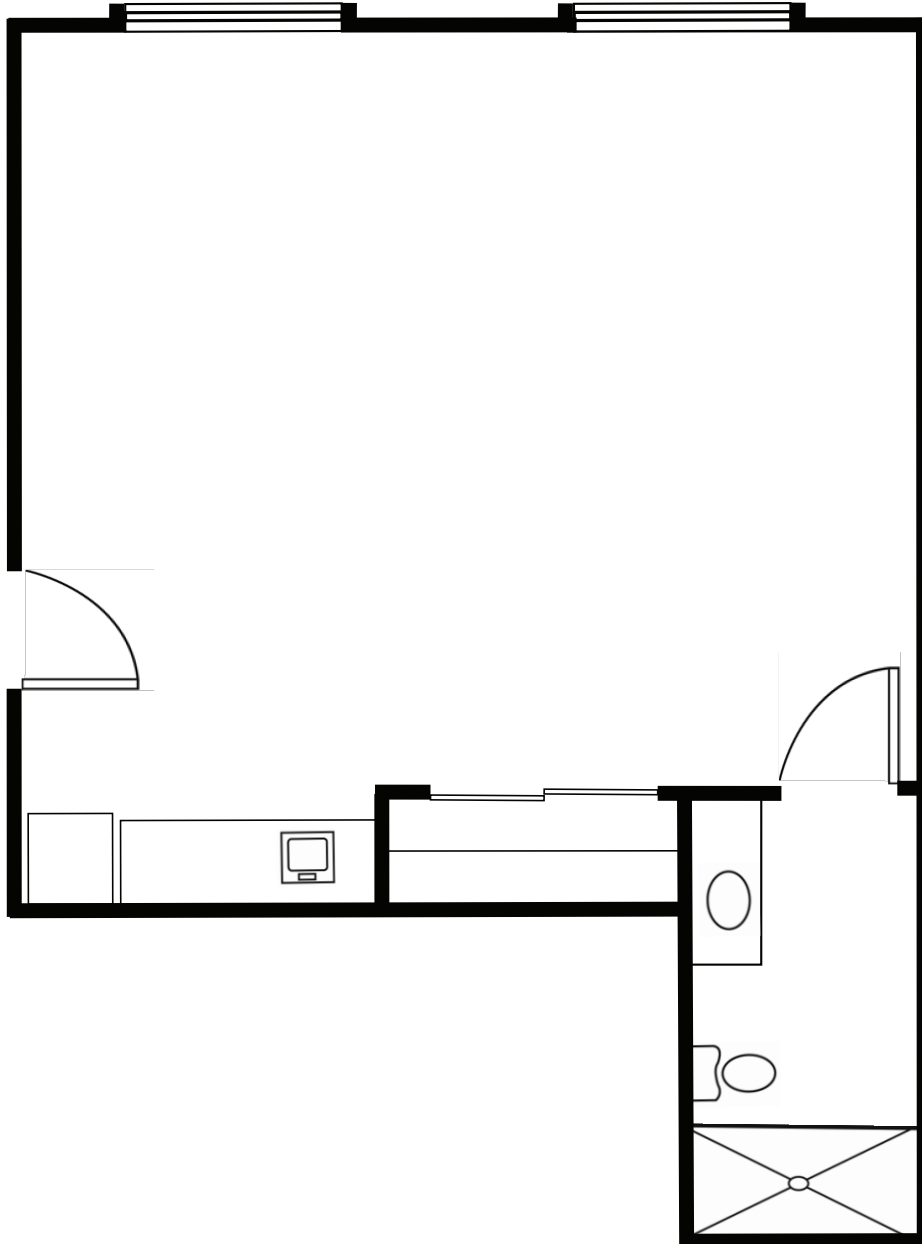
Senior Living

501 South Lincoln Road

Escanaba, MI 49829

906-789-2268 | ALF #000621

[enlivant.com](http://enlivant.com)



## Studio Deluxe

One Bath

522 Square Feet (approximately)



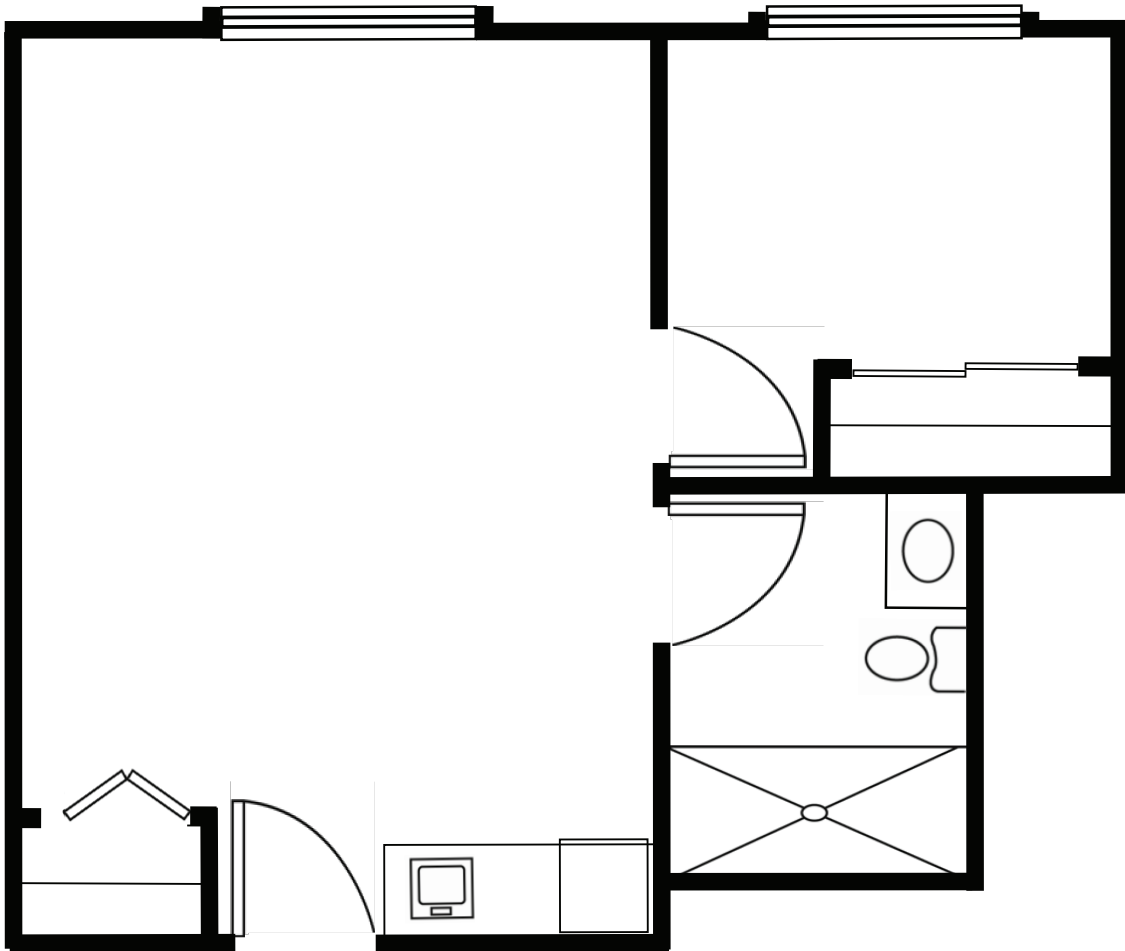


# North Woods Place

Senior Living

501 South Lincoln Road  
Escanaba, MI 49829  
906-789-2268 | ALF #000621

[enlivant.com](http://enlivant.com)



## One Bedroom

One Bedroom / One Bath  
600 Square Feet (approximately)

