



McCullough Place

Senior Living

500 Cheney Oaks Drive enlivant.com
Johnstown, PA 15905
814-255-2213

APARTMENT FEATURES

At McCullough Place, each deluxe apartment is specifically designed to offer an abundance of features that provide you with modern conveniences and design details that will make every day living more enjoyable. Some of these unique features include the following.

Comfort and Style

- Wall-to-Wall Carpeting
- Individually Controlled Heating and Air Conditioning
- Quality Construction Throughout
- Generous Closet and Storage Space

Convenience

- Refrigerator/Freezer
- Individual Indoor Mailboxes
- Complimentary Laundry Facilities

For Your Added Safety

- Emergency Call System in Each Apartment with Interface to Staff Pager System
- Sprinkler System Throughout
- Personal Safety Pendant Available
- Personal Care Staff Available 24 hours
- Smoke Detectors
- Illuminated Apartment Entry Ways
- Fiberglass Stall Shower with Built-In Safety Grab Bars

* *Reasonable accommodations considered upon request*

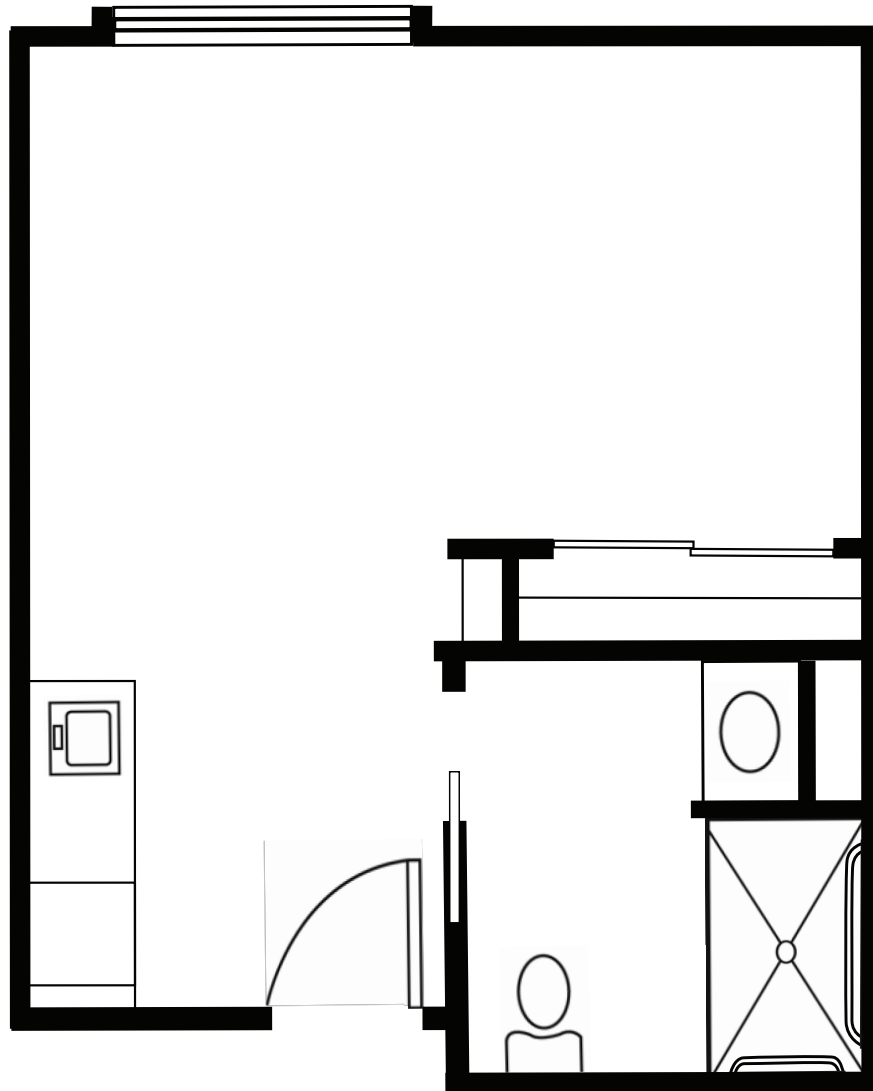




McCullough Place

Senior Living

500 Cheney Oaks Drive enlivant.com
Johnstown, PA 15905
814-255-2213



Studio

One Bath

356 Square Feet (approximately)

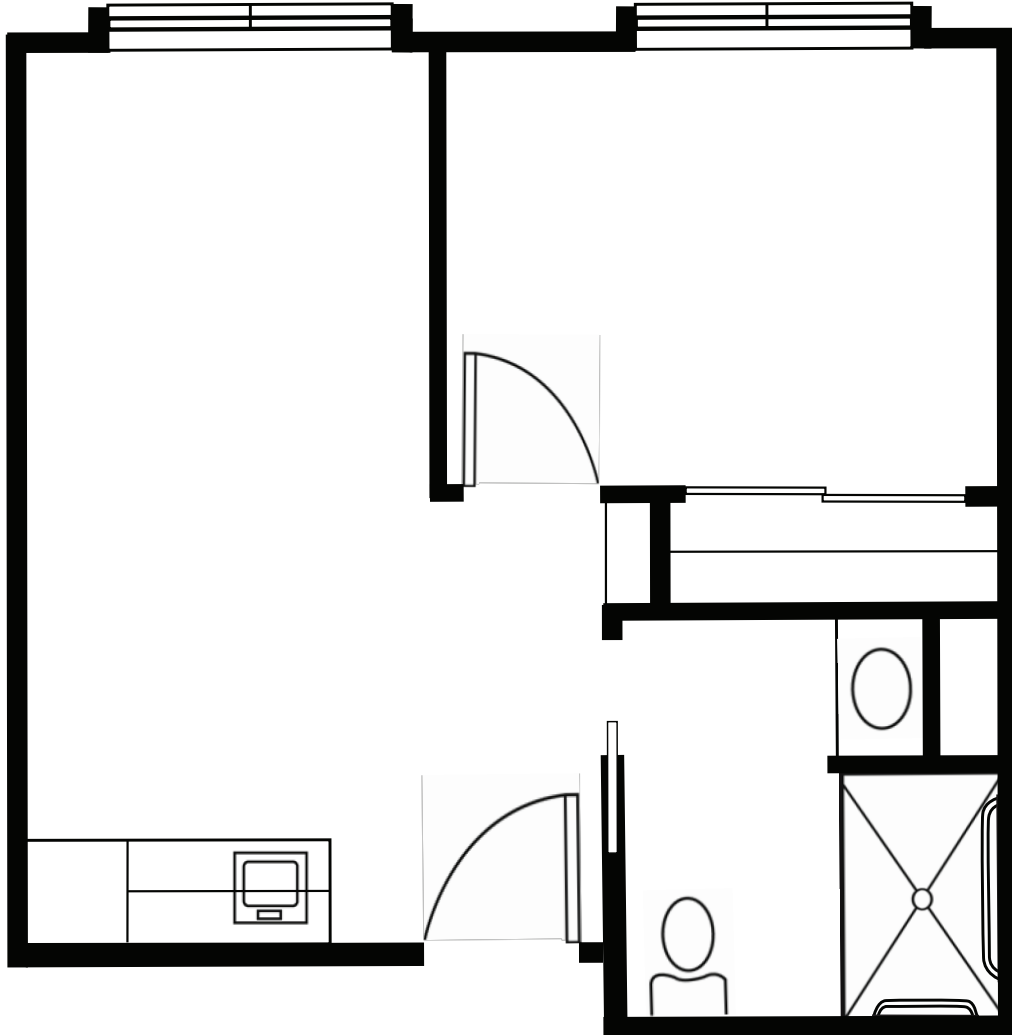




McCullough Place

Senior Living

500 Cheney Oaks Drive enlivant.com
Johnstown, PA 15905
814-255-2213



One Bedroom

One Bedroom / One Bath
470 Square Feet (approximately)

