



# Creekside Place

Senior Living

208 SW 20th Avenue  
Battle Ground, WA 98604  
360-666-8588

[enlivant.com](http://enlivant.com)

## APARTMENT FEATURES

At Creekside Place, each deluxe apartment is specifically designed to offer an abundance of features that provide you with modern conveniences and design details that will make every day living more enjoyable. Some of these unique features include the following.

### *Comfort and Style*

- Wall-to-Wall Carpeting
- Individually Controlled Heating and Air Conditioning
- Oak Kitchen Cabinets
- Quality Construction Throughout
- Generous Closet Space
- Window Treatments

### *Convenience*

- Frost-Free Refrigerator/Freezer
- Individual Indoor Mailboxes
- Complimentary Laundry Facilities

### *Safety*

- Emergency Call System in Bedrooms and Bathrooms
- Staff Pagers Interfaced with Emergency Call System
- Personal Care Staff Available 24 hours
- Smoke Detectors
- Fire Protection Sprinkler System
- Illuminated Apartment Entry Ways
- Fiberglass Tub/Shower Combination or Stall Shower with Built-In Safety Grab Bars
- Emergency Call System in Each Apartment with Interface to Staff Pager System
- Sprinkler System Throughout

\* *Reasonable accommodations considered upon request*



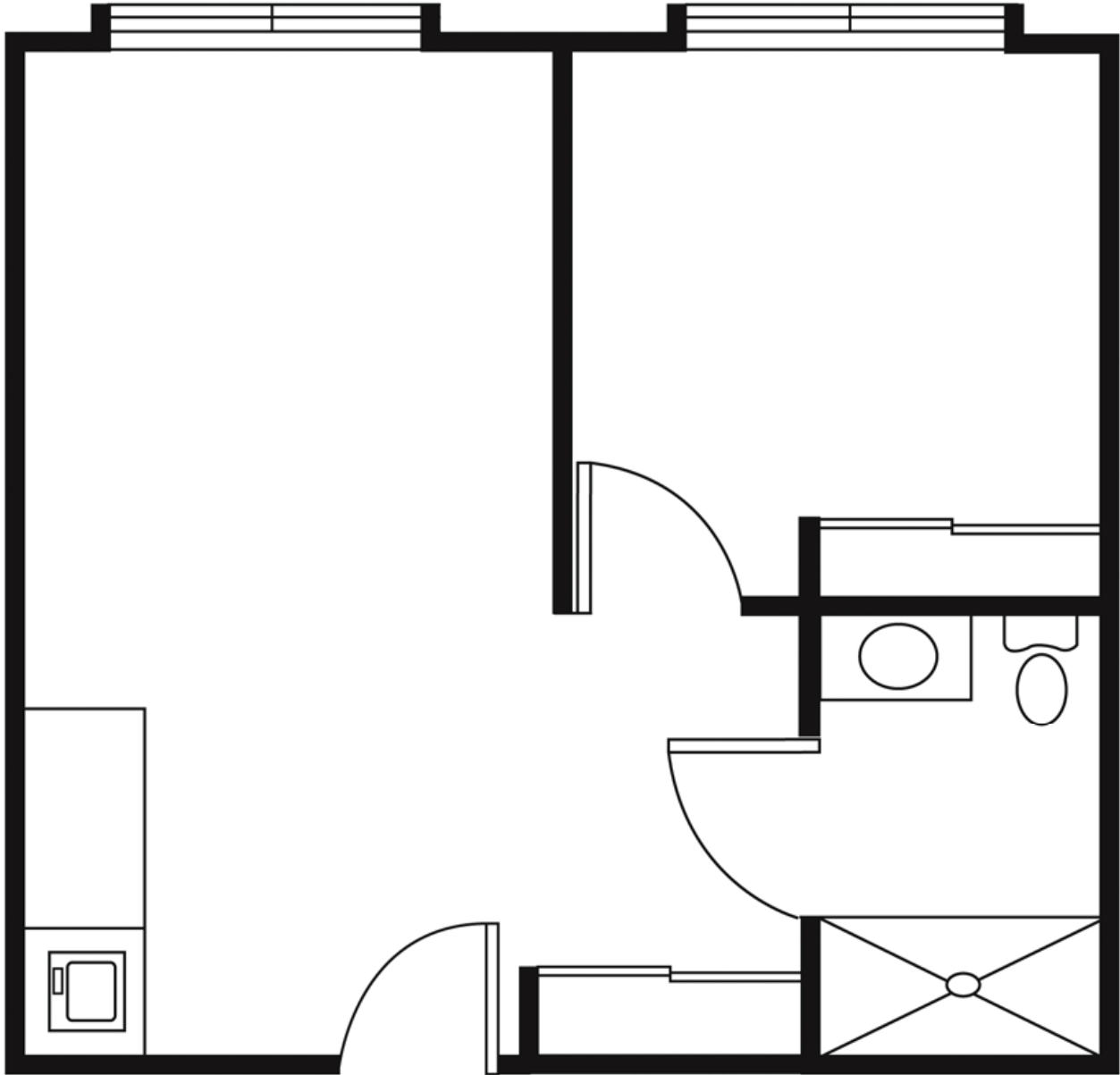


# Creekside Place

Senior Living

208 SW 20th Avenue  
Battle Ground, WA 98604  
360-666-8588

[enlivant.com](http://enlivant.com)



## One Bedroom

One Bedroom / One Bath  
519 Square Feet (approximately)



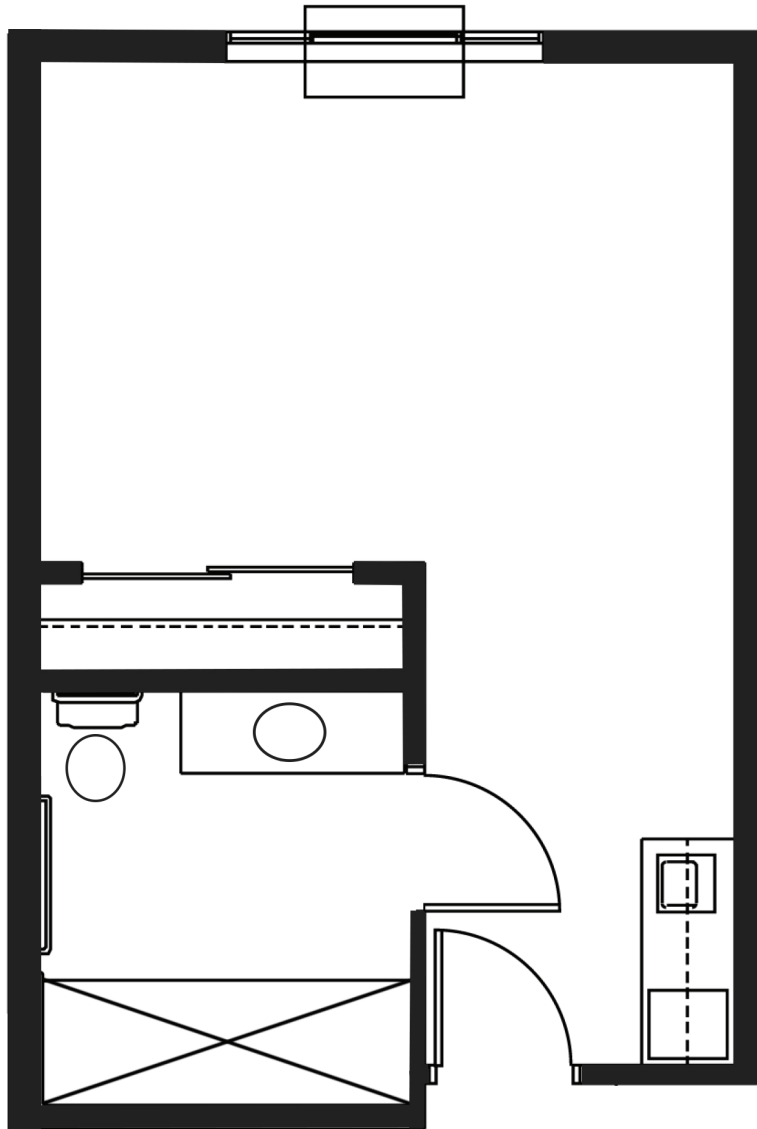


# Creekside Place

Senior Living

208 SW 20th Avenue  
Battle Ground, WA 98604  
360-666-8588

[enlivant.com](http://enlivant.com)



## Studio

One Bath

334 Square Feet (approximately)

