



Hoyt Place

Senior Living 1700 Hoyt Avenue
Sweetwater, TX 79556
325-235-5655 | ALF #000501

enlivant.com

APARTMENT FEATURES

At Hoyt Place, each luxury apartment is specifically designed to offer an abundance of features that provide you with modern conveniences and design details that will make every day living more enjoyable. Some of these unique features include the following.

Comfort and Style

- Wall-to-Wall Carpeting
- Individually Controlled Heating and Air Conditioning
- Quality Construction Throughout
- Generous Closet and Storage Space
- Window Treatments
- Built-in Bookshelf

Convenience

- Refrigerator/Freezer
- Individual Indoor Mailboxes
- Complimentary Laundry Facilities
- Kitchenettes with Microwaves

For Your Added Safety

- Emergency Call System in Each Apartment with Interface to Staff Pager System
- Sprinkler System Throughout
- Registered Nurse On-site or On Call
- Personal Care Staff Available 24 hours
- Smoke Detectors
- Illuminated Apartment Entry Ways
- Walk-in Showers with Built-in Safety Grab Bars

** Reasonable accommodations considered upon request*

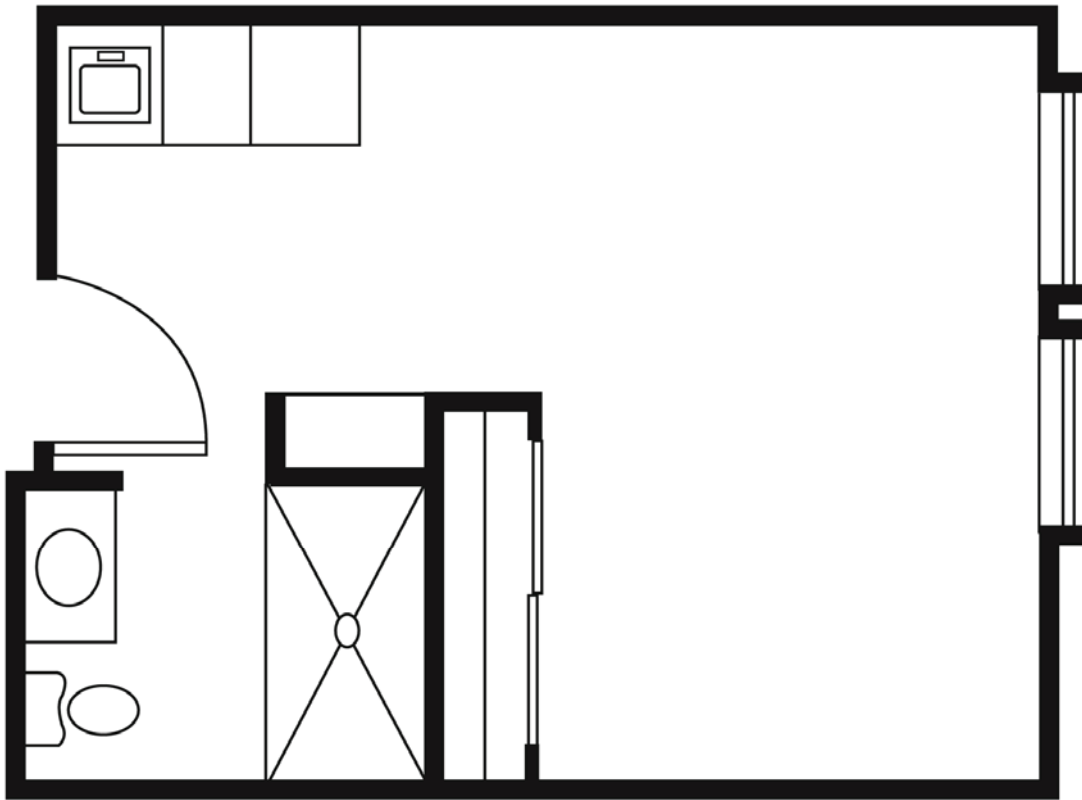




Hoyt Place

Senior Living 1700 Hoyt Avenue
Sweetwater, TX 79556
325-235-5655 | ALF #000501

enlivant.com



Studio

One Bath

240 Square Feet (approximately)

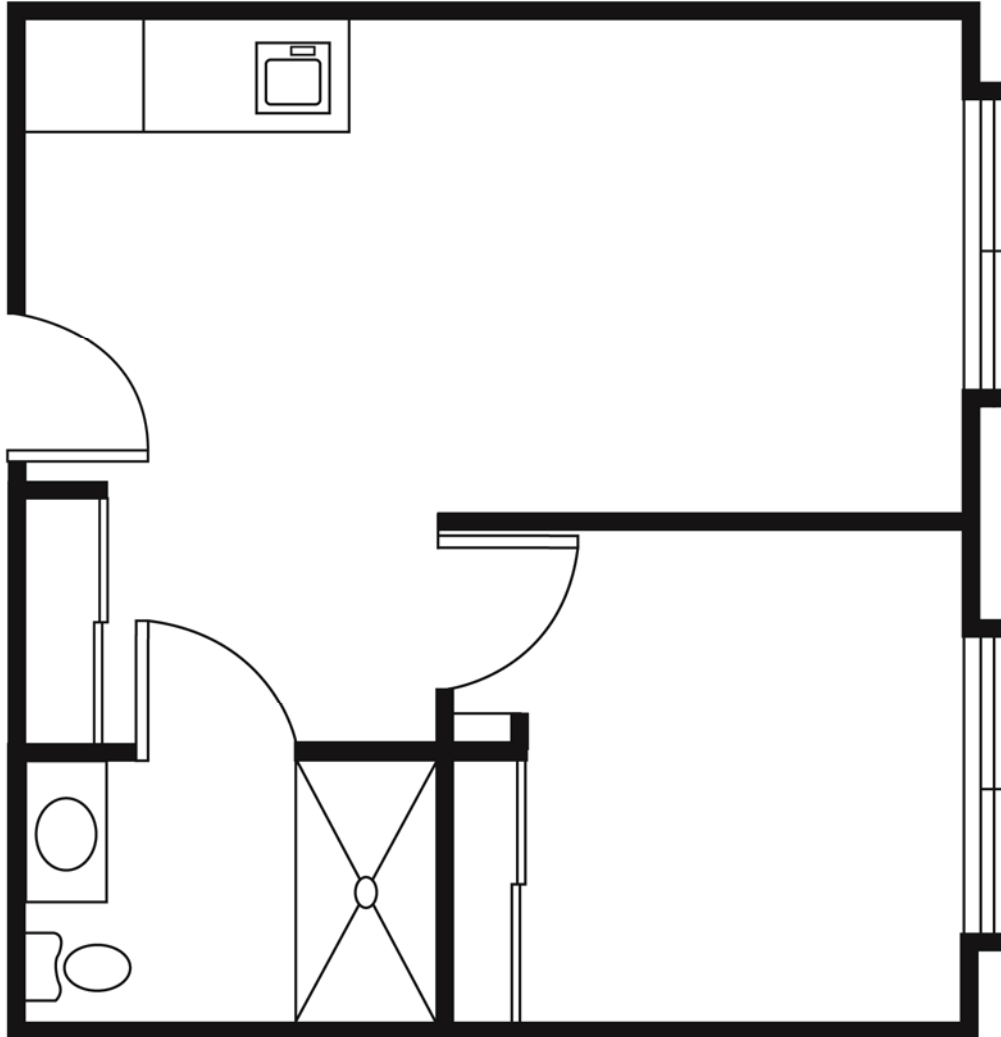




Hoyt Place

Senior Living 1700 Hoyt Avenue
Sweetwater, TX 79556
325-235-5655 | ALF #000501

enlivant.com



One Bedroom

One Bedroom / One Bath
390 Square Feet (approximately)

