



# Lake View Place

Senior Living

517 Luco Road  
Fond du Lac, WI 54935  
920-926-1100

[enlivant.com](http://enlivant.com)

## APARTMENT FEATURES

At Lake View Place, each luxury apartment is specifically designed to offer an abundance of features that provide you with modern conveniences and design details that will make every day living more enjoyable. Some of these unique features include the following.

### *Comfort and Style*

- Wall-to-Wall Carpeting
- Individually Controlled Heating and Air Conditioning
- White Laminate Cabinets
- Quality Construction Throughout
- Generous Closet Space
- Window Treatments

### *Convenience*

- Refrigerator/Freezer
- Microwave
- Individual Indoor Mailboxes
- Complimentary Laundry Facilities

### *For Your Added Safety*

- Emergency Call System in Each Apartment with Interface to Staff Pager System
- Sprinkler System Throughout
- Staff Pagers Interfaced with Emergency Call System
- Personal Care Staff Available 24 hours
- Smoke Detectors
- Illuminated Apartment Entry Ways
- Fiberglass Tub/Shower Combination or Stall Shower with Built-In Safety Grab Bars

*\* Reasonable accommodations considered upon request*



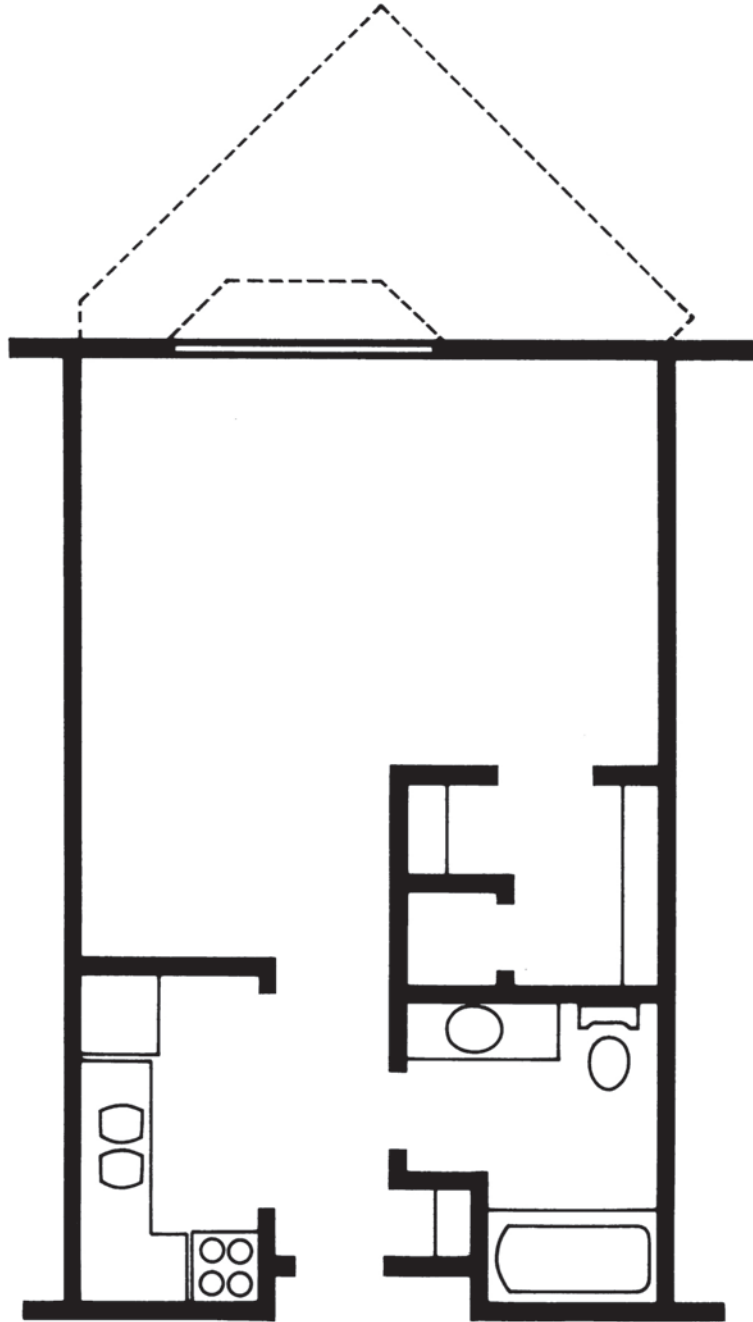


# Lake View Place

Senior Living

517 Luco Road  
Fond du Lac, WI 54935  
920-926-1100

[enlivant.com](http://enlivant.com)



## Studio

One Bath

491 or 508 Square Feet (approximately)



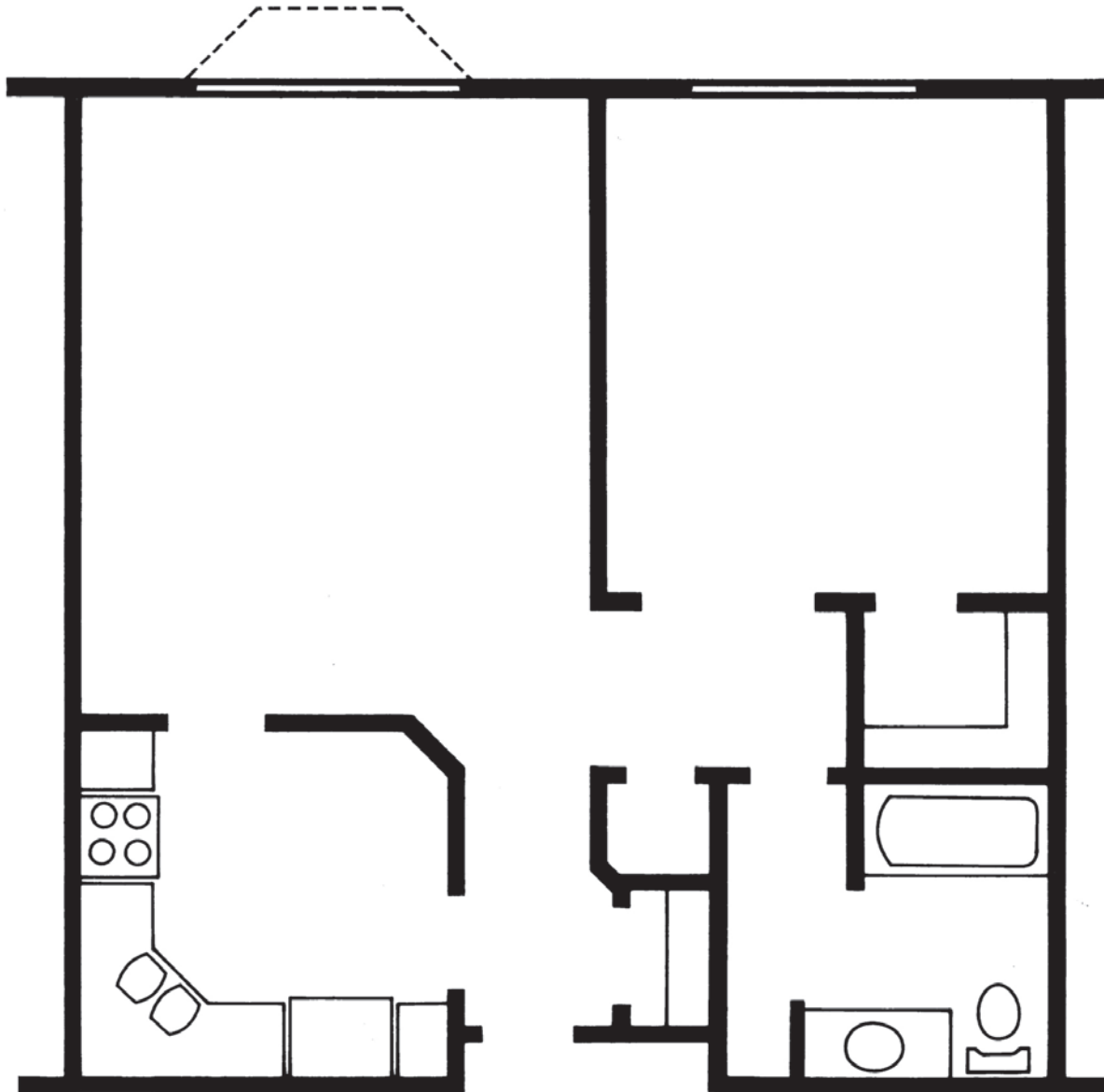


# Lake View Place

Senior Living

517 Luco Road  
Fond du Lac, WI 54935  
920-926-1100

[enlivant.com](http://enlivant.com)



## One Bedroom

One Bedroom / One Bath  
750 or 765 Square Feet (approximately)



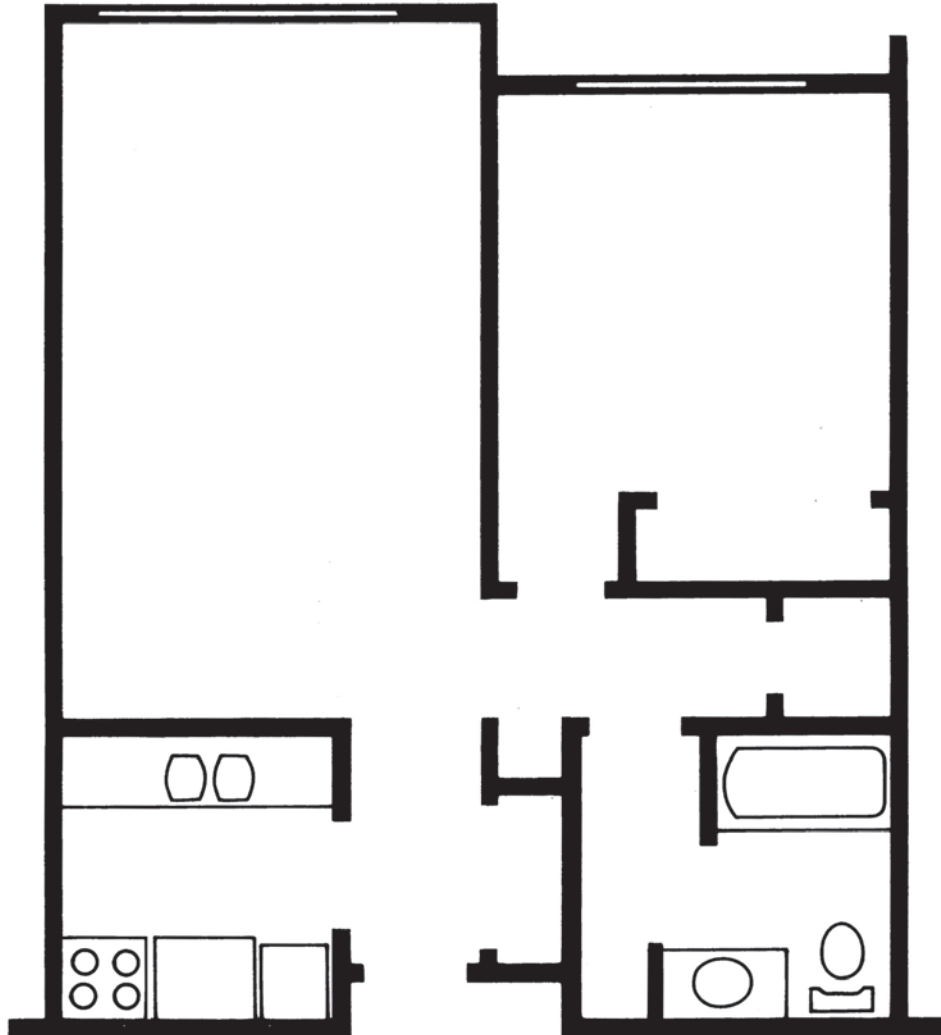


# Lake View Place

Senior Living

517 Luco Road  
Fond du Lac, WI 54935  
920-926-1100

[enlivant.com](http://enlivant.com)



## One Bedroom

One Bedroom / One Bath  
633 or 721 Square Feet (approximately)

