



# Manning Place

Senior Living

10 Companion Court  
Greer, SC 29651  
864-989-0707

[enlivant.com](http://enlivant.com)

## APARTMENT FEATURES

At Manning Place, each deluxe apartment is specifically designed to offer an abundance of features that provide you with modern conveniences and design details that will make every day living more enjoyable. Some of these unique features include the following.

### *Comfort and Style*

- Wall-to-Wall Carpeting
- Individually Controlled Heating and Air Conditioning
- Oak Kitchen Cabinets with locked storage space
- Quality Construction Throughout
- Generous Closet and Storage Space

### *Convenience*

- Refrigerator/Freezer
- Individual Indoor Mailboxes
- Laundry Facilities

### *For Your Added Safety*

- Emergency Call System in Each Apartment with Interface to Staff Pager System
- Sprinkler System Throughout
- Personal Care Staff Available 24 hours
- Personal Safety Pendant Available
- Smoke Detectors
- Illuminated Apartment Entry Ways
- Upgraded slip-free tile in bathrooms
- Stall Shower with Built-In Safety Grab Bars

\* *Reasonable accommodations considered upon request*



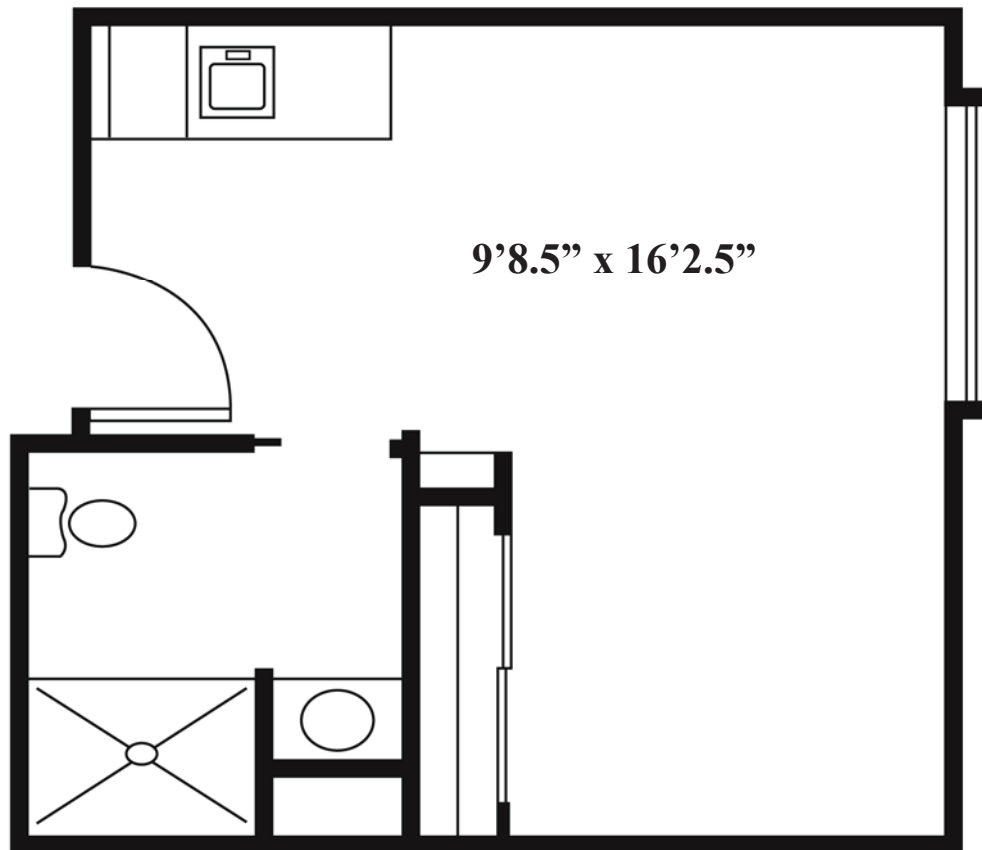


# Manning Place

Senior Living

10 Companion Court  
Greer, SC 29651  
864-989-0707

[enlivant.com](http://enlivant.com)



## Studio

One Bath

340 Square Feet (approximately)



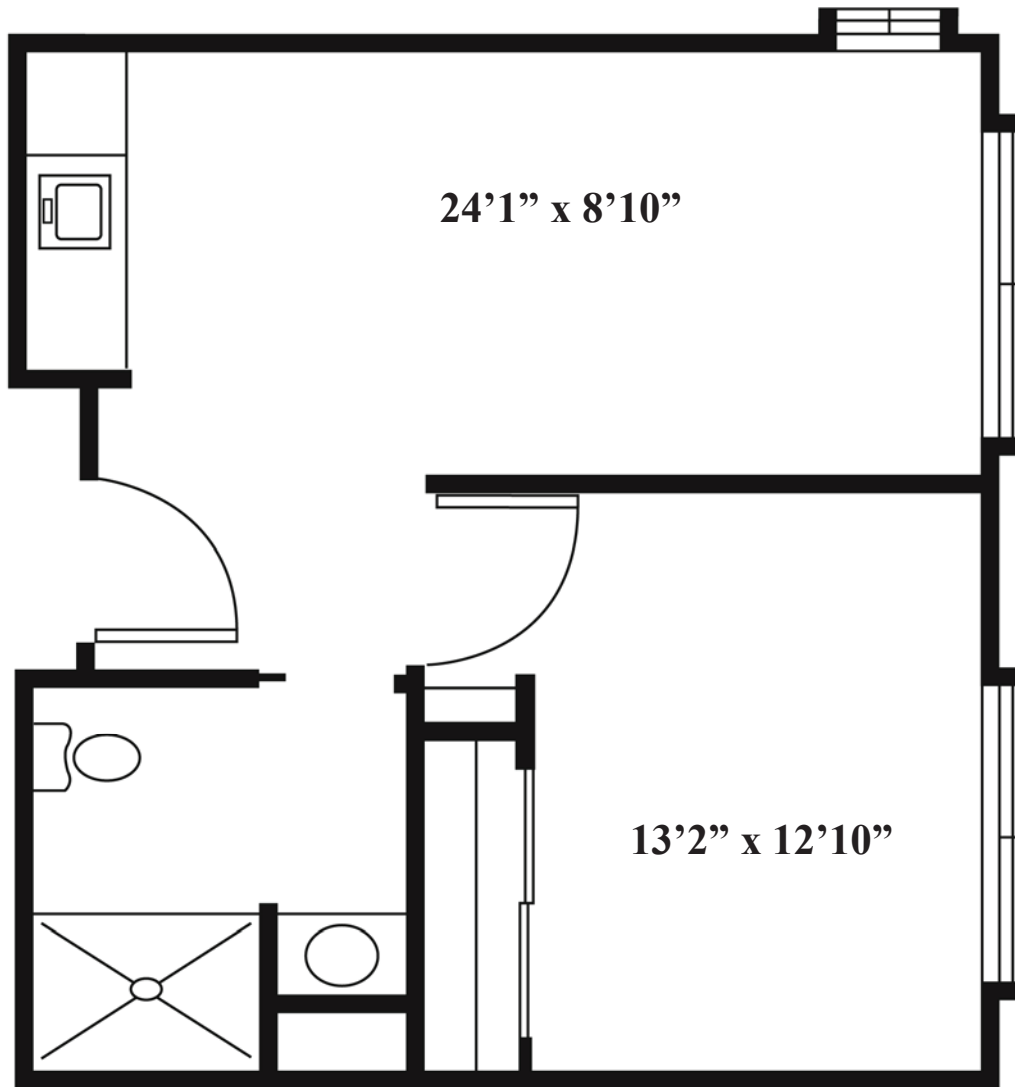


# Manning Place

Senior Living

10 Companion Court  
Greer, SC 29651  
864-989-0707

[enlivant.com](http://enlivant.com)



## One Bedroom

One Bedroom / One Bath  
540 Square Feet (approximately)

